

DIRECTIONS FOR USE:

IMPORTANT: This information is authorised as part of the product label. All instructions within this section must be read carefully in order to obtain safe and successful use of this product.

RESTRICTIONS / WARNINGS: Pyrethrum 5 EC is for use on protected crops only. Do not apply in direct sunshine or in very hot weather when it is advisable to apply in early morning or in the evening. Consult processor before using on crops for processing. Safety to beneficial organisms used in IPM systems has not been established and cannot be assumed. There are no restrictions on following crops.

CROPS AND PESTS CONTROLLED:

CROP	PESTS	LEVEL OF CONTROL	APPLICATION RATE
Tomato Pepper	Aphids	Control	650 ml/ha in a volume of 275 - 600 L/ha under permanent protection with full enclosure.
Aubergine Courgette	Thrips	Moderate control	
Cucumber	Whitefly Spider mite		

RESISTANCE: Pesticide resistance in glasshouse whitefly, spider mites and some aphids is widespread. Where strains resistant to products containing pyrethrins occur, Pyrethrum 5 EC is unlikely to give satisfactory control. Note: Resistant strains of the Tobacco whitefly are also known to occur. Where resistant strains are present repeat treatments are likely to result in lower level of control. Total reliance on one pesticide will hasten the development of resistance. Pesticides of different chemical types or alternative control measures should be included in the planned programme. Alternating pesticides with different modes of action is a recognised anti-resistance strategy and Pyrethrum 5 EC should always be used in conjunction with other insecticides of a different mode of action.

RATES OF USE: For all crops and pest apply Pyrethrum 5 EC at a maximum individual dose of 650ml per hectare.

TIMING OF APPLICATION: Apply Pyrethrum 5 EC as soon as pest or pest damage is seen and when motile stages of pests are most active.

SPRAY PROGRAMME AND HARVEST: Crops may be sprayed at 7 day intervals and harvested 24 hours after the last application.

MIXING AND SPRAYING:

Pyrethrum 5 EC is an emulsifiable concentrate for dilution with water prior to use.

MIXING: Shake well and dilute with water before use. Mix thoroughly and use immediately.

WATER VOLUME: It is essential to achieve good spray coverage of the target crop foliage for optimum pest control. Apply in a volume between 275 - 600 litres per hectare to ensure thorough coverage of foliage up to the point of run-off. Ensure that both upper and lower surfaces of the leaves are treated.

CLEANING APPLICATION EQUIPMENT: Wash equipment thoroughly immediately after use. Fill the tank with clean water plus some wetter or detergent and flush out. Refill with water and spray out before storage or using other products. Traces of Pyrethrum 5 EC may cause damage to susceptible crops sprayed later.

Pyrethrum 5 EC must be stored in a suitable pesticide store in a dark place.

PROTECT FROM FROST



INSECTICIDE PYRETHRUM 5 EC

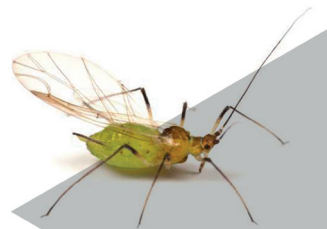
MAPP 18532

**AN EMULSIFIABLE CONCENTRATE (EC) FORMULATION
CONTAINING 5% (W/V) PYRETHRINS.**

Pyrethrum 5 EC is a contact insecticide for use against chewing and sucking pests including aphids (blackfly and greenfly), thrips, whitefly and red spider mite on protected fruit and vegetable crops.



1 litre e



PYRETHRUM 5 EC. An emulsifiable concentrate formulation containing 5% (w/v) pyrethrins. Contains: piperonyl butoxide, odourless kerosene and sodium dialkyl sulfosuccinate.

DANGER. May be fatal if swallowed and enters airways. Causes skin irritation. May cause an allergic skin reaction. Causes serious eye damage. May cause an allergic skin reaction. Very toxic to aquatic life with lasting effects.



Do not eat, drink or smoke when using this product. Wear protective gloves/ protective clothing/ eye protection/ face protection. **IF SWALLOWED:** Immediately call a POISON CENTER/ doctor. Do NOT induce vomiting. **IF IN EYES:** Rinse cautiously with water for several minutes. Remove contact lenses, if present and easy to do. Continue rinsing. Immediately call a POISON CENTER/ doctor. If skin irritation or rash occurs: Get medical advice/ attention. Do not breathe spray. Avoid release to the environment.

To avoid risks to human health and the environment comply with the directions for use.

SAFETY PRECAUTIONS:

Operator Protection: Engineering control of operator exposure must be used where reasonably practicable in addition to the following personal protective equipment: Operators must wear suitable protective clothing (coveralls), suitable protective gloves and face protection (faceshield) when handling the concentrate. However, engineering controls may replace personal protective equipment if a COSHH assessment shows they provide an equal or higher standard of protection. **WHEN USING DO NOT EAT, DRINK OR SMOKE. WASH HANDS AFTER USE.**

The (COSHH) Control of Substances Hazardous to Health Regulations may apply to the use of this product at work.

IMPORTANT INFORMATION:

FOR USE ONLY AS A PROFESSIONAL INSECTICIDE/ACARICIDE.

Crops: Protected crops of tomato, pepper, aubergine, cucumber and courgette.

Maximum individual dose: 0.65 litres/ha.

Maximum number of treatments: Three per crop. Latest time of application: 1 day before harvest.

Other specific restrictions:

a) Treatment must only be made under "permanent protection" situations which provide full enclosure (including continuous top and side barriers down to below ground level) and which are present and maintained over a number of years.

b) Reasonable precautions must be taken to prevent access of birds, wild mammals and honey bees to treated crops.

c) To minimize airborne environmental exposure, vents, doors and other openings must be closed during and after application until the applied product has fully settled.

READ THE LABEL BEFORE USE. USING THIS PRODUCT IN A MANNER THAT IS INCONSISTENT WITH THE LABEL MAY BE AN OFFENCE. FOLLOW THE CODE OF PRACTICE FOR USING PLANT PROTECTION PRODUCTS.

Environmental Protection:

Do not contaminate water with the product or its container. Do not clean application equipment near surface water. Avoid contamination via drains from farmyards and roads. Dangerous to bees. Remove or cover beehives during application and for 24 hrs after treatment.

Storage and Disposal:

KEEP OUT OF REACH OF CHILDREN. KEEP AWAY FROM FOOD, DRINK AND ANIMAL FEEDING STUFFS. KEEP IN ORIGINAL CONTAINER, tightly closed, in a safe place. EMPTY CONTAINER COMPLETELY and dispose of safely.



International
Authorisation Holder & Marketing Company:
PelGar International Ltd
Unit 13 Newman Lane, Alton
Hampshire, GU34 2QR, UK.
Tel. 01420 80744 www.PelGar.co.uk

Batch No.:
DOM:
DOE:

UFI: 1C90-10WJ-100K-HS2G



5 055058 075376 >

T0000BEV4